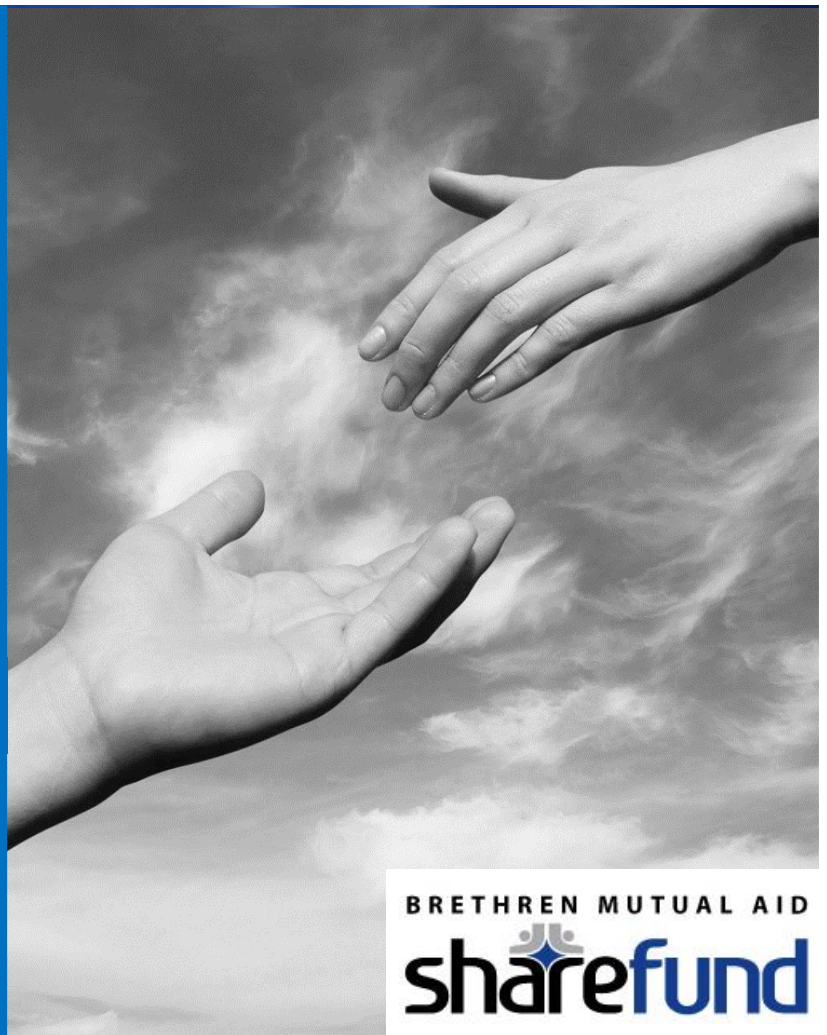




BRETHREN MUTUAL AID SHARE FUND

AUGUST 2020

3094 JEEP ROAD
ABILENE, KS 67448
(800) 255-1243



Mutual Aid Agency's mission goes beyond insurance. We stand ready to lend a helping hand, share resources, and bear each other's burdens during times of crisis. Our desire is to be something more than just our membership: we want to become mutual aid. That is why we founded the Brethren Mutual Aid Share Fund 25 years ago. The Share Fund is a nonprofit corporation, created to assist the congregations, camps, and related ministries who insure with MAA with the caring and sharing outreach they do within their churches and communities. When you choose to insure with us, you are also choosing to support the Share Fund. MAA tithes to this fund annually, to enhance the lives of others through this financial partnership.

How does it work? When persons find themselves in crisis – be it sudden job loss or reduced hours, property destruction, burial expenses, medical bills, or other unexpected financial hardships – their ministry may assist them through their benevolent giving. If so, the Share Fund promises to partner with the ministry by donating a matching financial gift. Once an application has been submitted, an administrator of the Brethren Mutual Aid Share Fund reviews the request, giving up to \$500 per eligible ministry annually.

In 2020, the Share Fund board elected to double all Share Fund grant requests related to the COVID-19 virus. By offering this added relief, we are pleased to further our mission and honor our heritage: a willingness to share generously with those in need.

MAA is dedicated to serving those around us. We know we are a different kind of insurance agency – we would not want it any other way!

To learn more about the Brethren Mutual Aid Share Fund, donate to the organization, or apply for someone in your community, visit bmasharefund.org